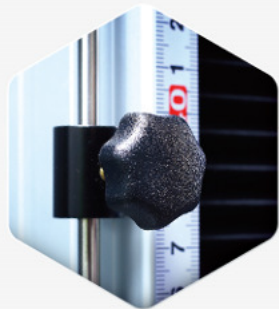


## Conform to Standards

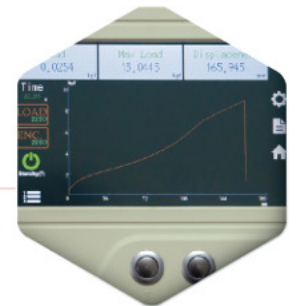
ISO 7500-1, ASTM E4 , ASTM D-76, DIN5122 , JIS B7721/B7733 , EN 1002-2, BS1610,GB T228

## Applicable Industry

Rubber, Plastic, Paper, Textile, Metal, Wood, Tape, Electronics, Packaging, Health Care, and Construction Industry



Limit Switch



Display



Common Joint for Both Tensile and Compression Test



Speed control switch

## Description

506D1 is a double column, table-top universal testing machine with max capacity of 20kN. It has a larger testing area, which provide greater capability to customize test environment based on users' needs.

Users can conduct the test directly or using D1 software on computer with Windows 7 or above. D1 can perform tensile, compression, bending, peeling and some other tests.

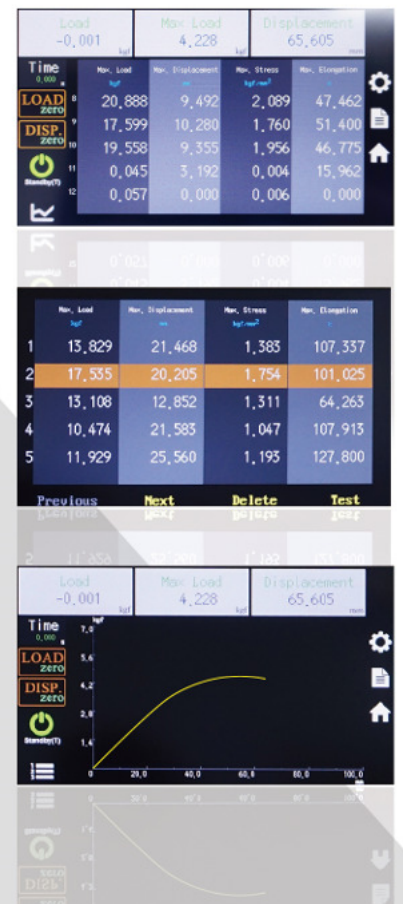
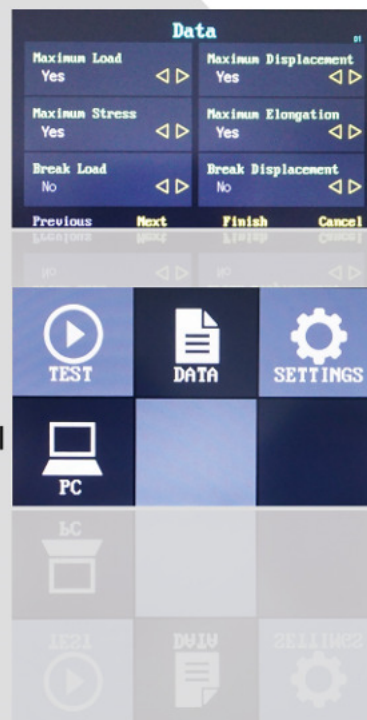
With multiple languages, both Metric and Imperial units, D1 is very easy to learn and convenient to use. It can also display test graph instantly. With various of analysis providing, users can analyze their test result better and generate test report with our software.

# Specification

Model	Standard QC-506D1	Height Extend QC-506D1
Capacity	20 kN	
Load cell resolution	23 bits	
Load cell accuracy	1/10,000	
Test stroke	800mm	1200mm
Displacement resolution	0.001mm	
Cantilever distance	425mm (500mm, 680mm, 800mm optional)	
Speed Range	25~650mm/min adjust by DIP switch	
Min speed	25mm/min at 1000kg 45mm/min at 2000kg	
Connect to PC through	TCP/IP port with software cable provide upon purchase	
Data sampling rate	Max 1200Hz	
Hardware protection	Upper and lower limit switches and emergency stop button	
Power source	DC motor	
Rigidity	1484 kgf/mm	
Feature	※Plug and play interface accessories for quick installation. ※Signal I/O and test space is preserved for expansion if needed in future.	
Power Phase	Single phase 100/220 VAC, 5A	
Dimension	86 × 60 × 150 cm	84 x 60 x 195 cm
Weight	145 kg	190 kg

## Standard Accessories - D1 Display

- 7" TFT Color Display
- Langue: Chinese, English, Japanese
- Data Display: Force, Pressure, Torque, Displacement, Time.
- Can modify setting of Hardware, Test, Unit, Data, Protection and graph.
- Can switch between Metric and Imperial
- Store up to 50 data
- Output test data through USB port

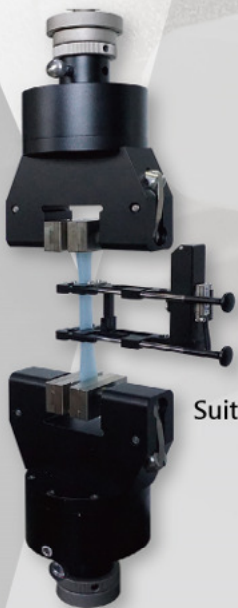


## Optional Accessories - Software Function

- Has multiple analysis.
- Can customize data name.
- Sampling rate: at most 1200Hz
- Has both Metric and Imperial unit.
- Can show/hide test data or graph
- Operation System: Windows 7 or above
- Can display multiple test data at once.
- Can save, load, list and compare data.
- Can reallocate test table to your preference.
- Can display in Chinese, English and Japanese.
- Control the machine thru TCP/IP port with computer.
- Can set up over-load, over-travel or overtime protection.
- Can run compression, tensile, bending, peeling tests... etc.
- Axis can be set to force, elongation, display, time, strain or stress... etc



## Optional Accessories - Extensometer



QC-557 Short extensometer

Suitable for samples with elongation below 50%



QC-551 Long travel extensometer

Suitable for samples with over 20% elongation

# Report Form

Print Date/Time 2016/6/21 07:47:00

## Company Information

**Name** Cometech Testing Machines Co., Ltd.  
**Address** No.49, Ln. 39, Lianucn Rd., Fengyuan Dist, Taichung City, 40982  
**Tel.** 04-25368881  
**Fax** 04-25368883  
**E-MAIL** sales@come-tech.com.tw



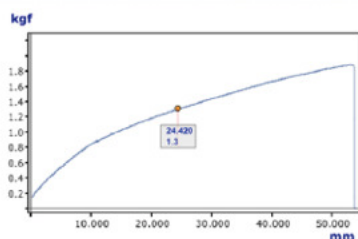
## Specification

**Test NO.** 1  
**Test Spec** TEST1  
**Tester** John  
**Test Method** Tensile **Test Speed** 500 mm/min  
**Pre-Load** 0.1 kgf **Test Date** 2016-06-17  
**Gauge Length** 100 mm **Inertia** 1.667 mm  
**Width** 20 mm

## Data Table

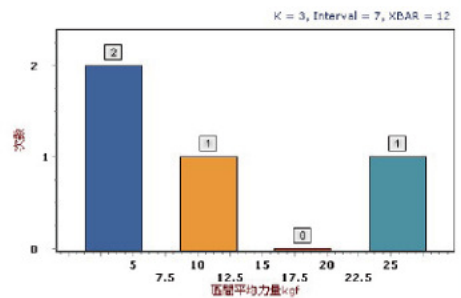
Item1	F.max	E.max	Time.max	F.break	E.break	Time.break	Width
Item2							
Unit	kgf	mm	sec	kgf	mm	sec	mm
1	1.2	22.732	17.470	0.8	24.051	18.380	20.000
2	1.9	63.190	40.497	1.8	53.730	45.736	20.000
3	1.8	51.137	38.591	1.5	51.138	38.630	20.000
4	2.5	50.821	38.472	1.7	51.096	38.631	20.000
5	1.9	50.290	38.078	1.8	50.596	38.154	20.000
Max	2.5	63.190	40.497	1.8	53.730	45.736	20.000

## Graph

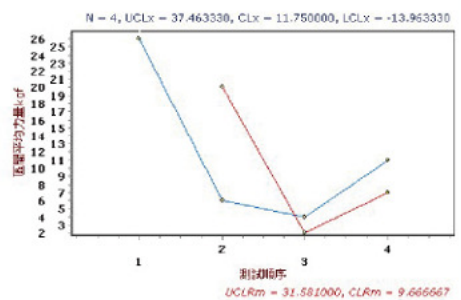


1

## 直方图



## 折线图



2

\*Cometech reserves the right to change any of the specification of this product at any time .

**COMETECH TESTING MACHINES CO.,LTD.**  
 No.49,Ln,39,Lianucn Rd, Fengyuan Dist, Taichung City420,Taiwan  
 Tel:886-4-25368881 / Fax:886-4-25368883  
 E-mail: sales@come-tech.com.tw  
 URL: http://www.come-tech.com.tw

