



Make an Informed Decision

COMETECH TESTING MACHINES CO.,LTD.

Tel: +886 4 2536 8881
Fax: +886 4 2536 8883
Email: sales@come-tech.com.tw

No. 49, Ln. 39, Liancun Rd.,
Fengyuan Dist, Taichung City,
42082 Taiwan

<http://www.cometech.com.tw>

<http://www.ujmtest.com>

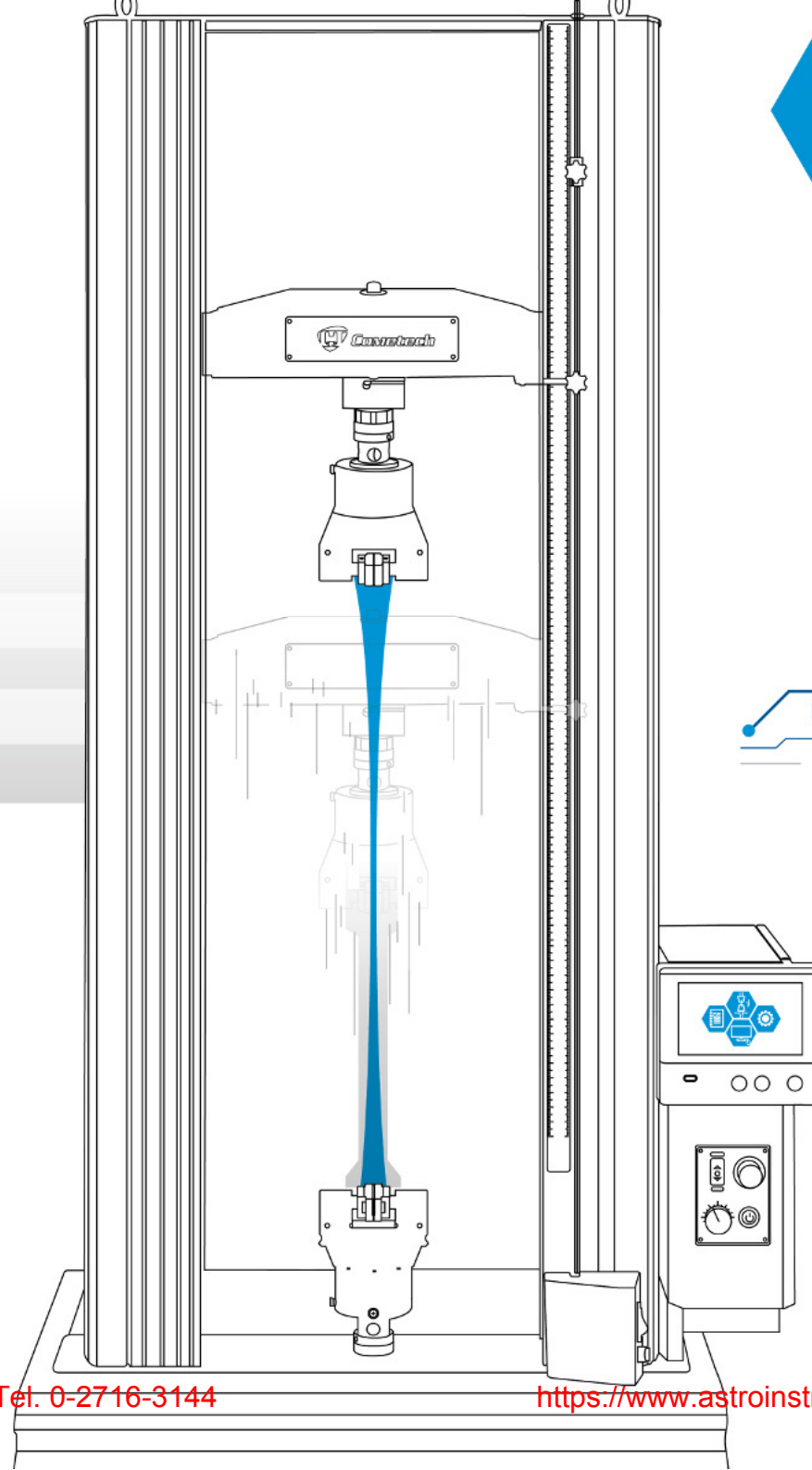
ตัวแทนจำหน่าย Astro Instrument Co., Ltd.

Tel. 0-2716-3144

<https://www.astroinstrument.com>



M2F
UNIVERSAL
Materials Testing Machine





About Cometech

We serve a variety of industries around the world, including plastic, rubber, tape, electronics, packaging, paper, metal and building materials industries, etc.

About Cometech

Cometech Testing Machines, the most excellent manufacturer of quality control equipment in Taiwan. We are a team consists of professional technicians, with researching and developing ability of soft-ware and hard-ware, we are a pioneer in the quality control instrument industry with developing experts and a large scale R&D team in Taiwan. Moreover we receive high recognition from customers by our manufactured capacity and pre-services and after-services, and we are pretty appreciated for their continued support. At the current stage, Cometech is one of few manufactures who can enter into Japanese, European and USA testing instrument market.

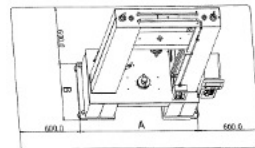
M2F series of products are launched in 2017; they are equipped with a variety of testing capabilities and expandability. It is suitable for various kinds of industries. No matter on what kind of materials, finished products and semi-products, we could provide you the most appropriate solutions for all of team. Welcome to contact with us.

Universal Testing Machines

COMETECH Universal Testing Machines load capacities range from 500 N to 600 KN. Users could select suitable model according to test force, elongation, material and size of specimen etc. All of accessories including from loadcells, grips, fixtures, extensometers, software and peripheral equipment are available.

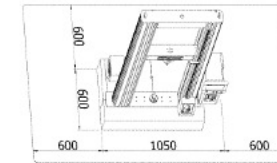
M2F series provides comprehensive and high-standard functions which is capable to satisfy wide range of materials testing requirements and enhance efficiency and productivity in testing operations.

Its superior performance would be the best idea choice for whatever your material testing need, whether in production, quality accuracy, quality control or research and development.



Dimension

Model	A	B	height(cm)
500 50A	155	85	295
501 502	145	66	235
503	135	60	220



Dimension

Model	Dimension
QC-505M2F	105 x 60 x 195 cm

How to choose my right model ?

1. Single Column Tabletop Model

- Capacities up to 5KN.
- For small-strength test.
- Compact size for small specimen test and saves valuable working space.
- Commonly used for textiles, thread, tape, plastic film, paper, small components and microelectronics.

2. Dual-Column Tabletop Model

- Capacities up to 20 KN.
- For Mid- Force Test.
- Expandable test space is available to go with various grips and accessories.
- Commonly used for plastic, rubber, metal, composite and automotive component.

3. Dual-Column Floor Model

- Capacities up to 600 KN.
- For High-Capacity Test.
- Sturdy and durable frame for the most wide applications.
- Commonly used for high-strength metal ,alloy, advanced composite, aerospace and automotive structure, bolt, fastener and lumber.

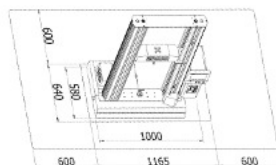
Specifications

Model	50AM2F	500M2F	501M2F	502M2F	503M2F	QC-505M2F
Max. capacity	600kN	500kN	300kN	200kN	100kN	50kN
Force Resolution	31bits					
Force Precision	1/100,000					
Test Stroke(w/o grip)	1500mm			1100mm		
Stroke resolution	0.0001 mm					
Space between columns	550mm(680mm,800mm)				420mm	
Speed range	0.0002~330 (mm/min)		0.0001~330 (mm/min)		0.0001 ~ 375 (mm/min)	0.0002 ~ 600 (mm/min)
PC-Port	RJ45(TCP/IP)					
Data sample rate	Maximum 1200 Hz					
Motor type	Servo motor					
Power Supply	3 phase 200~240VAC · 70 A		Signal phase 200~240 VAC, 30A	Signal phase 200~240 VAC, 20A	Signal phase 200~240 VAC, 10A	Single phase 200 ~ 240VAC, 8A
Weight	2350kg		1250kg	1250kg	800kg	360kg
Operating environment	Temperature: 20 ~ 30 °C, Humidity: 30 ~ 80% (RH)					

Universal Testing Machines



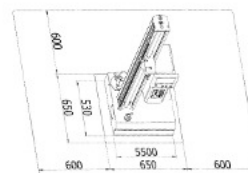
QC-546M2F



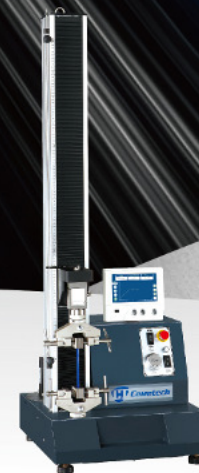
Dimension
100 × 58 × 151 cm
100 × 58 × 190 cm



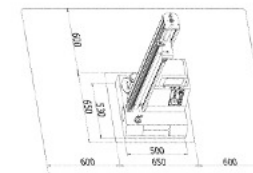
QC-548M2F



Dimension
50 × 53 × 145 cm
50 × 53 × 180 cm



QC-513M2F



Dimension
50 × 53 × 100 cm

- Automatic reading of load cell feature information
- Automatic reading of displacement sensor feature information
- Force display, displacement display, time display, stress display and strain display
- External analog input (2-channel simultaneous reading of voltage or current)
- Test force automatically zero
- Test force self-defined calibration
- Break point detection
- Automatic return
- Force overload protection
- Hardware safety protection: upper limit, lower limit, emergency stop button

Specifications	
Model	QC-546M2F
Max. capacity	20kN
Force Resolution	31bits
Force Precision	1/100,000
Test Stroke(w/o grip)	850 mm 1250 mm
Stroke resolution	0.0001 mm
Space between columns	425mm
Speed range	0.0002 ~ 1000mm/min
PC-Port	RJ45(TCP/IP)
Data sample rate	Maximum1200 Hz
Motor type	Servo motor
Power Supply	Single phase 200~240VAC, 5A
Weight	145kg 170kg
Operating environment	Temperature: 5 °C to 40° C; Humidity: 20% to 80% (no condensation)

Specifications			
Model	QC-548M2F		QC-513M2F
Max. capacity	2kN	5kN	5kN
Force Resolution	31bits		
Force Precision	1/100,000		
Test Stroke(w/o grip)	1100mm	800mm	400 mm
Stroke resolution	0.0001mm		
Cantilever distance	75mm		70mm
Speed range	0.0002 ~ 1000mm/min		
PC-Port	RJ45(TCP/IP)		
Data sample rate	Maximum1200 Hz		
Motor type	Servo motor		
Power Supply	Single phase 200 ~ 240VAC, 5A		
Weight	95kg	80kg	65kg
Operating environment	Temperature: 5 °C to 40° C; Humidity: 20% to 80% (no condensation)		

ตัวแทนจำหน่าย **Astro Instrument Co., Ltd.**

Tel. 0-2716-3144

<https://www.astroinstrument.com>

High quality, we insist

High efficiency, high quality and safety are our pursuit : no matter from frame, software, hardware to detail components we insists on high quality.



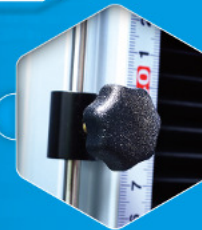
Load cell:

Load cell of UTM with memory function, while it needs to be changed or maintained, original factory will do calibration before dispatch to customers side. Customer can install directly to use without any setting



(QC-546, QC-505, QC-503)

The separated electronic control box can provide multiple choices for maintenance upgrades, which makes far-end user more convenient in technological processes. In addition, user can extend machine using life time and reduce the maintenance cost of machine.



Limit Switch:

Standard safety features include double limit switches



Emergency stop button:

Reliably cuts off power to the servo amplifier, instantaneous stop crosshead movement in case of an emergency.



Common Joint for Both Tensile and Compression Tests :

Adopts a single joint for both tension and compression tests, which makes user easier to exchange fixtures.



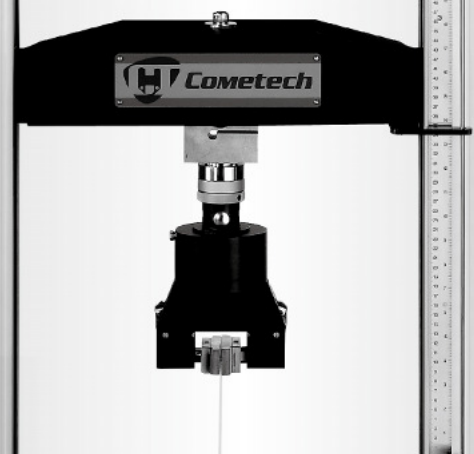
Jog controller:

The exterior keys and with accurate jog controller can make crosshead accurate positioning a breeze. Especially, it is very suitable for doing calibration, which enhance machine safety and convenience.

Grips

Main accessories

- ▶ Multiple grips for different tests, including tensile, compression, shear, peel, tear, flexural and other physical tests.
- ▶ Customized grips plane to meet special test requirements with ease.



Why M2F Touch Screen panel is important?

M2F panel is designed for quick test demand and especially suitable in production line.

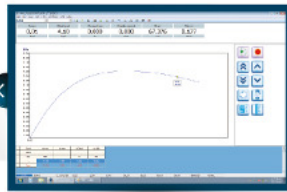
Minimize test steps:

Conducting a test directly through control panel, viewing result and calculation without returning to the computer workstation

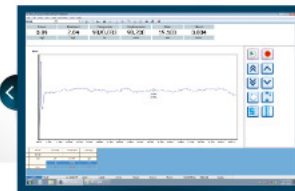
Displayer



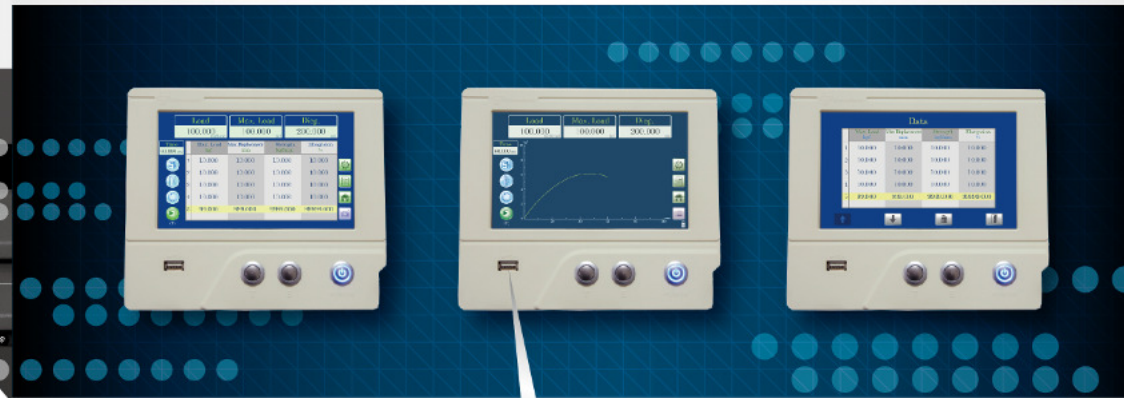
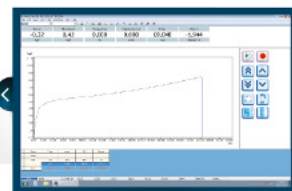
Bending Test



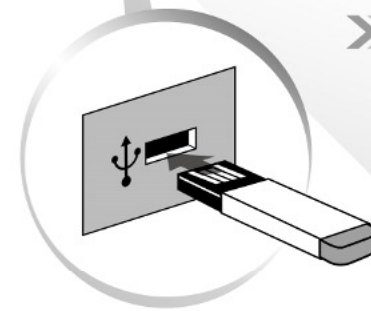
Peeling Test



Tensile Test



- 7 -inch of TFT Color touch screen display data and curve
- With multi-signal input includes stress, torque. Signal could be entered into system for different analysis.
- High Data sample rate (1200Hz) conduct analysis in short period and faster feedback control.
- Various kind of units can be changed according to user's demand when using it.
- Utilize live displays to monitor real-time data. (for example, Load, Max Load, displacement)
- Data can be restored and exported to EXCEL sheet for further analysis by USB.
- When customer has a special requirement, it also could be modified and designed based on their needs.



EXCEL FORM

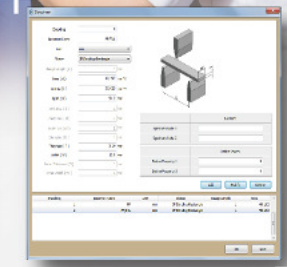
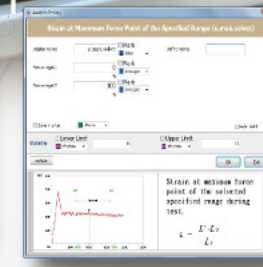
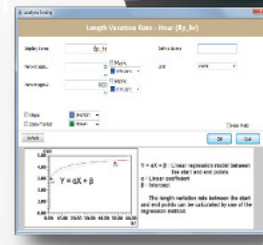
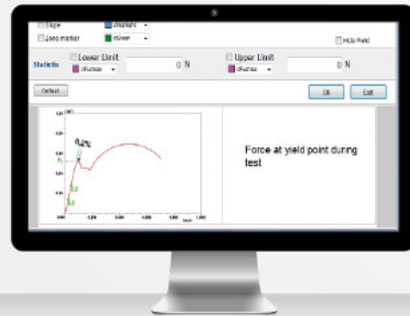
	A	B	C
1	Load	Encoder	Time
2	N	mm	S
3	5.83	0.02	0.02
4	6.57	0.03	0.04
5	7.10	0.09	0.06
6	7.54	0.07	0.08
7	8.11	0.09	0.10
8	8.46	0.12	0.12
9	9.37	0.14	0.14
10	10.06	0.17	0.16
11	10.89	0.20	0.18
12	11.65	0.22	0.20
13	12.25	0.25	0.22
14	12.84	0.28	0.24
15	12.87	0.32	0.26
16	13.13	0.35	0.28
17	13.82	0.39	0.30
18	13.70	0.42	0.32
19	14.03	0.46	0.34
20	14.28	0.50	0.36
21	14.43	0.54	0.38
22	14.63	0.59	0.40
23	14.81	0.63	0.42
24	14.94	0.68	0.44
25	15.07	0.72	0.46
26	15.27	0.77	0.48
27	15.32	0.82	0.50
28	15.90	0.87	0.52
29	16.37	0.92	0.54
30	16.91	0.98	0.56
31	17.57	1.03	0.58
32	18.32	1.09	0.60
33	18.92	1.15	0.62
34	19.50	1.21	0.64
35	20.26	1.27	0.66
36	21.13	1.33	0.68
37	21.93	1.40	0.69
38	22.69	1.46	0.71
39	23.44	1.53	0.73
40	24.17	1.60	0.75
41	24.74	1.67	0.77
42	25.22	1.74	0.79
43	25.60	1.81	0.81
44	25.94	1.89	0.83
45	26.25	1.96	0.85
46	26.51	2.01	0.87
47	26.73	2.11	0.89
48	26.79	2.19	0.91



MF2 Software

Cometech's testing software is user-friendly, accurate and cost-effective

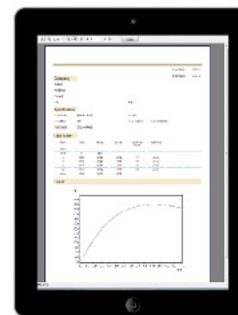
Whether you are testing to existing standards, creating your own test programs or exporting your test data to a database, Cometech provides superior performance and practical testing solution for a wide applications.



Feature



- Through Ethernet (RJ45) connects controller to achieve and send back measuring data, to update instant various which is testing method and data analysis.
- Data Capture Rate could up to :1200 Hz
- Providing various kinds of safety device.
- Prolonged constant tension and contact strain (ex. Creep test) could be fulfilled



Report form - Reports can be output in PDF · Excel · HTML · RTF

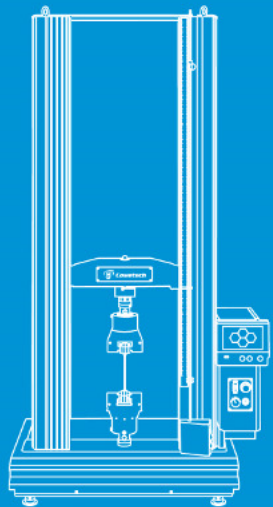
Main Function Introduction

- Conversation and illustration window clearly show user how to input setting, data analysis.
- Various unit is selectable: Unit is interchangeable between Metric and Imperial systems, and is capable to set the decimal place of each unit.
 - *Force: gf, kgf, lbf, N, kN, ozf, tonf(SI), ton(long), tonf(short).
 - *Pressure: Kpa, Mpa, psi, bar, mm-Aq, mm-Hg.
- Various kinds of shape is selectable.
 - Display illustrations for each specimen shape.
 - A single glance shows which dimensions should be entered.
 - Easy-to-understand illustrations are used in the [Tension], [Specimen], and [Data Processing] window.
- In addition to manual input, dimensions can be set via (Automatic input via calipers.)
- Remark function: enter additional, non-dimensional information for each specimen.
- Software protection: Overload, over -displacement, over-time protection.



Support and Services

Global sales areas: more than **50** countries



Goal / mission

Our mission at Cometech is to be recognized as your best backup in physical testing instrumentation. Cometech keep our original intention to produce and develop more QC (Quality Control) instruments. In the future, we seek to have diversified and international cooperation. Cometech's supports to make our partner possess competitiveness, building a win-win situation with customers is our final goal. For the most up-to date information on your specific application, visit Testing Solutions at www.Come-tech.com.tw